



# EPESUS

## Solutions for Sustainable Cities

EPESUS Cities is an IT Platform for big data management and decision support for districts or cities to promote circular economy models.

- Decision support for urban sustainability issues

Models and analyses urban nexus (materials, energy and cost) based on urban metabolism concept



Reference: IABR-2014-PROJECT ATELIER ROTTERDAM animation by Submarine

- Analyses sustainability actions (e.g. nature based solutions and energy efficiency measures)
- Agent based modelling to assess social aspects of sustainability measures



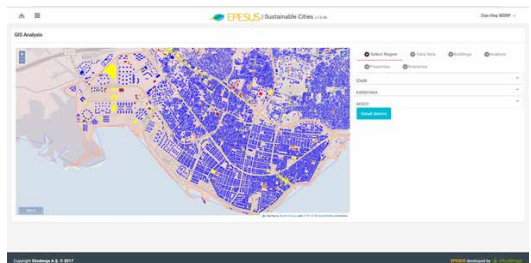
Nature4Cities project will provide a knowledge diffusion and decision support web-platform for urban re-naturing through new collaborative models.



Ekobina project will deliver a building energy management platform as a mesh sensor network and control based decision making support tool with complex event processing.

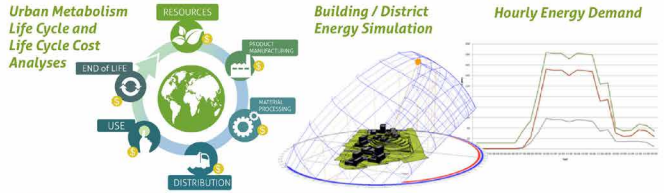
- Supports Sustainable Energy and Climate Action Plans (SECAP) by GIS and LCA based simulations for building energy and greenhouse gas emissions

References:  
 Muğla Province  
 Karşıyaka Municipality (İzmir)  
 Kartal Municipality (İstanbul)

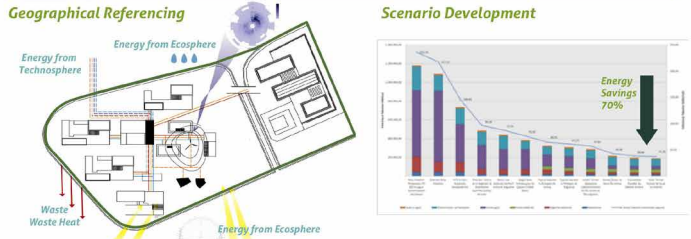


# EPESUS Cities Structure

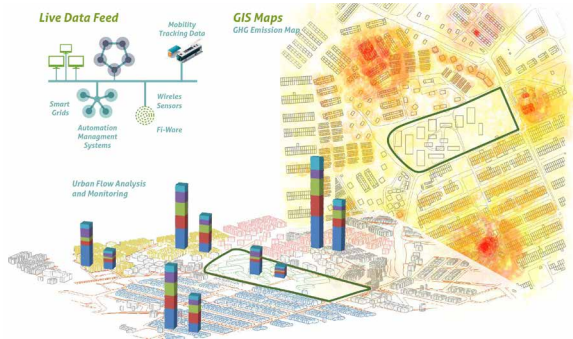
## Data collection



## Geo-referencing



Big data analytics for urban ecosystems and urban level presentation



## Decision Support Capabilities:

- Performance analysis via benchmarking of improvement options
- Scenario development for medium and long term sustainability solutions
- Integrated assessment of all urban flows via multi-objective optimization
- Detailed reporting and visualization with mobile access



📍 Hacettepe Technopolis R&D Building No. 1 / 18 06800 Beytepe/ ANKARA/ TURKEY (+90)312 299 25 55

📍 Level 39, One Canada Square Canary Wharf, London E14 5AB, UK

🌐 [www.ekodenge.com](http://www.ekodenge.com)  
[info@ekodenge.com](mailto:info@ekodenge.com)

